



UFINDIT

Monitor your assets' & people's location from anywhere, anytime!

creative minds connecting people, objects and data: the professional IoT & business automation services!



monitor your assets' & people's location from anywhere!

UFINDIT offers a complete hardware and software solution for indoor asset tracking. This RTLS solution helps you to automatically monitor and control each asset location.



UFINDIT

easily adaptable!

UFINDIT is easily adaptable to any type of space or buildings, from warehouses, sports facilities, office spaces or manufacturing facilities.





user friendly 3D map representation!

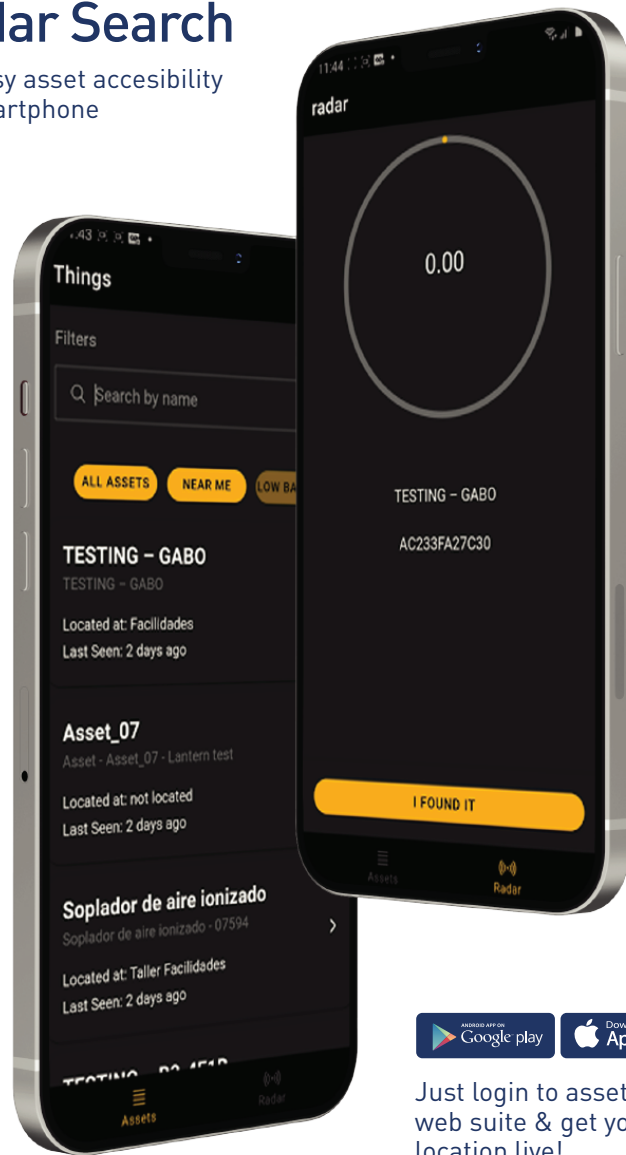
ATS combines the power of cutting edge IoT Technologies with cost-efficient hardware tags to enable monitoring and control of your assets within indoor locations, using intuitive & userfriendly 3D Map representations of your facilities.





Radar Search

For easy asset accessibility via smartphone



Just login to asset tracker web suite & get your assets location live!

sense 4 capabilities

- Adapts easily to any type of industrial machinery and monitors in a wireless way the energy usage and consumption in real time.
- The information uploads in the Sesense 4 cloud-based servers and it is available for their immediate analysis.
- Connect easily to any production equipment in any place in only a few minutes.
- Start your online session in the Sense 4 web suite and watch your machines, productive areas or productivity levels of your company live.



BLE wifi gateway endless sensing possibilities

It's a faster and safer gateway with powerful BLE & Wi-Fi CPU and WPA 2.0 enterprise encryption for data security and transmission.



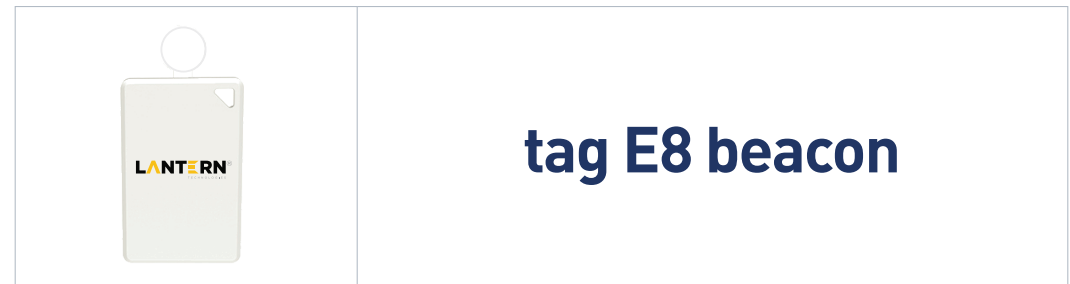


BLE • wifi gateway

Radio	WiFi	IEEE 802.11 b/g/n 2.4 GHz
	WiFi Power	18 dBm
	WiFi Rate	300 Mbps
	Bluetooth	Bluetooth 4.x/ 5.0
	BLE Protocols	iBeacon, Sensor Data, Custom Data
	BLE Transmit Power	-40dBm, -20dBm, -16dBm -12dBm, -8dBm, -4dBm, 0dBm, 4dBm
	BLE Rate	1Mbps, 2Mbps
	Receiver Sensitivity	-108 dBm
	Range	Up to 300 meters

Power Supply	DC	5V - 1A MicroUSB
	PoE	02.3af PoE standard

Others	Size	Ø 150 × 36 mm (Built-in antenna)
	Weight	180g
	Case Material	ABS Plastic
	CPU	575 MHz 32-bit Application Processor
	Memory	128 MB 16-bit DDR2 RAM
	Upgrade	Ukey / OTA
	Ports	2 USB 2.0 Host Controller, TF Card Slot for data backup, 10/100 Ethernet
	Protocol Support	HTTP(SSL/TLS), MQTT(SSL/TLS)/TCP
	Operating Temperature	De -25°C a 65°C
Warranty	1 year	



tag E8 beacon

Radio	Bluetooth	Bluetooth 5.0
	BLE Protocols	iBeacon, Eddystone, Sensor Data
	Antenna	PCB Antenna 2.4GHz
	Advertising Interval	From 100 ms to 5000 ms
	Transmit Power	-40dBm, -20dBm, -16dBm -12dBm, -8dBm, -4dBm, 0dBm, 4dBm
	Range	Up to 50 meters

Battery	Model	CR2032
	Capacity	225 mAh
	Reemplazable	Yes
	Operating temperature	De -20°C a +60°C
	Lifetime	Up to 1 year 900ms

Sensors	Accelerometer	Low power consumption 3 axis accelerometer
----------------	---------------	--

Others	Size	36.5 x 23.7 x 5 mm
	Weight	6.2g
	Material	ABS plastic housing
	Chipset	nRF52 series
	Warranty	1 year
	Case design	Mini size design with keychain hole



tag S1 temperature

Radio	Bluetooth	Bluetooth 5.0
	BLE Protocolos	iBeacon, Eddystone, Sensor Data
	Antenna	Antenna PCB 2.4GHz
	Interval	From 100 ms to 5000 ms
	Transmit Power	-40dBm, -20dBm, -16dBm -12dBm, -8dBm, -4dBm, 0dBm, 4dBm
	Range	Up to 100 meters

Battery	Model	2xFR03 Li-Fe battery
	Capacity	1250 mAh
	Reemplazable	Yes
	Operating temperature	From -20°C to +60°C
	Lifetime	Up to 3 years / Reemplazable

Sensors	Temperature	Range -40°C~70°C Measure -40°C~50°C, ±0.5°C Accuracy ≤10°C or ≥50°C, ±2°C Measure Resolution 0.05°C
	Humidity	Range 0%~100%RH Measure 0%~90%RH, ±2.5%RH Accuracy ≥90%RH, ±3.5%RH Measure Resolution 0.05%RH

Others	Size	70.6 x 38 x 17.8mm
	Weight	43g
	Case Material	ABS Plastic
	Chipset	nRF52832 ultra low power
	Case	IP65 waterproof
	Warranty	1 year



tag E6 light sensor

Radio	Bluetooth	Bluetooth 5.0
	BLE Protocolos	iBeacon, Eddystone, Sensor Data
	Antenna	Antenna PCB 2.4GHz
	Interval	From 1000 ms to 10000 ms
	Transmit Power	-40dBm, -20dBm, -16dBm -12dBm, -8dBm, -4dBm, 0dBm, 4dBm
	Range	Up to 50 meters

Battery	Model	CR2032 Li-Fe battery
	Capacity	230 mAh 3V
	Reemplazable	Yes
	Operating temperature	From -20°C to +60°C
	Lifetime	Up to 3 years / Reemplazable

Sensors	Switch	anti-dismantlement
	Light sensor	Photoresistor

Others	Size	42.5 x 23.5 x 5.3 mm
	Weight	6.5g
	Case Material	ABS Plastic
	Chipset	nRF52832 ultra low power
	Case	IP65 waterproof
	Warranty	1 year



tag C10 badge

Radio	Bluetooth	Bluetooth 5.0
	BLE Protocolos	iBeacon and Eddystone simultaneously
	Antenna	Antenna PCB 2.4GHz
	Interval	From 100 ms to 5000 ms
	Transmit Power	-40dBm, -20dBm, -16dBm -12dBm, -8dBm, -4dBm, 0dBm, 4dBm
	Range	Up to 80 meters

Battery	Model	CR2032 Li-Fe battery
	Capacity	230 mAh 3V
	Reemplazable	Yes
	Operating temperature	From -20°C to +60°C
	Lifetime	Up to 3 years / Reemplazable

Sensors	Accelerometer	Optional
	125 kHz RFID (LF)	Optional
	13.56MHz NFC (HF)	Optional
	868~915MHz RFID (UHF)	Optional

Others	Size	85.5 × 54×4.5mm
	Weight	18.5g (LF,HF) / 15.5g (UHF)
	Case Material	ABS Plastic
	Chipset	nRF52 ultra low power
	Case	IP68 waterproof
	Warranty	1 year



tag B7 wristband

Radio	Bluetooth	Bluetooth 5.0
	BLE Protocolos	iBeacon and Eddystone simultaneously
	Antenna	Antenna PCB 2.4GHz
	Interval	From 100 ms to 5000 ms
	Transmit Power	-40dBm, -20dBm, -16dBm -12dBm, -8dBm, -4dBm, 0dBm, 4dBm
	Range	Up to 90 meters

Battery	Model	CR2032
	Capacity	220 mAh
	Reemplazable	Yes
	Operating temperature	From -20°C to +60°C
	Lifetime	Up to 3 years with default settings

Sensors	Accelerometer	Optional
	13.56MHz NFC (HF)	Build In

Others	Size	Φ 35.9 x 11mm
	Weight	12g
	Wristband	Detachable
	Case Material	ABS Plastic
	Chipset	nRF52 ultra low power
	Case	IP66 waterproof
	Warranty	1 year



tag S3 temperature and humidity

RADIO	Bluetooth	Bluetooth 5.0
	BLE Protocolos	iBeacon, Eddystone, Sensor Data
	Antenna	Antenna PCB 2.4GHz
	Interval	From 100 ms to 5000 ms
	Transmit Power	0dBm
	Range	Up to 100 meters

BATTERY	Model	ER14250, DC3.6V
	Capacity	1250 mAh
	Reemplazable	Yes
	Operating temperature	From -20°C to +60°C
	Lifetime	Up to 2.5 years

SENSORS	Temperature	Range -40°C~70°C Measure -40°C~50°C, ±0.5°C Accuracy ≥-25 °C or ≤60°C ±0.4°C Measure Resolution 0.05°C
	Humidity	Range 0%~100%RH Measure 0%~90%RH, ±2.5%RH Accuracy ≥0% or ≤ 90% RH, ±3%RH Measure Resolution 0.05%RH
	Accelerometer	3 - axis low power accelerometer

OTHERS	Size	72.2 x 45 x 22 mm
	Weight	61.5g
	Case Material	ABS Plastic
	Chipset	nRF52 ultra low power
	Case	IP66 Dust and waterproof
	Warranty	1 year



tag S4 door - window

RADIO	Bluetooth	Bluetooth 5.0
	BLE Protocolos	iBeacon
	Antenna	Antenna PCB 2.4GHz
	Interval	From 100 ms to 5000 ms
	Transmit Power	0dBm
	Range	Up to 100 meters

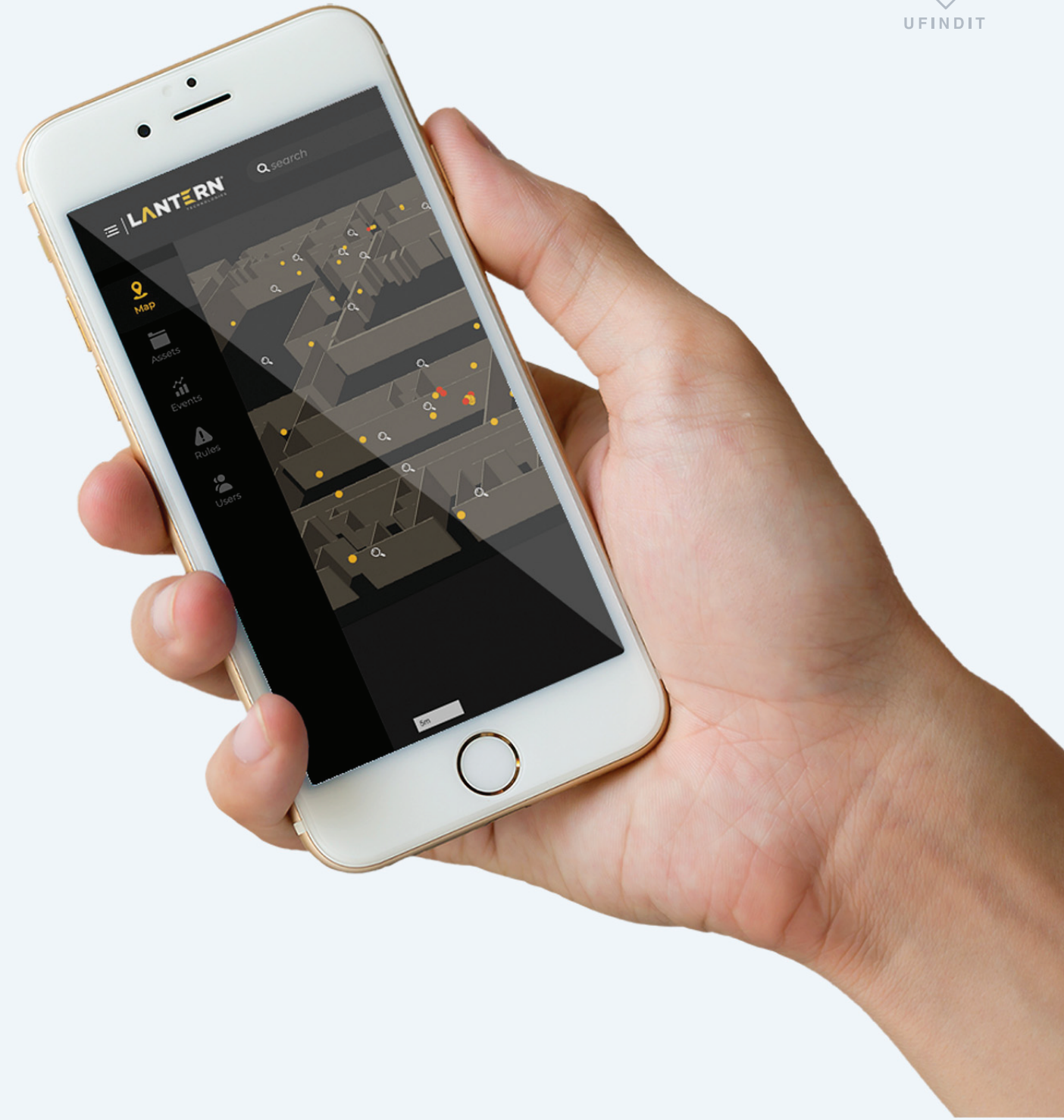
BATTERY	Model	CR2032 3V
	Capacity	220 mAh
	Reemplazable	Yes
	Operating temperature	From -20°C to +60°C
	Lifetime	Up to 1 year

SENSORS	Magnetic sensor	Magnetic sensor
----------------	-----------------	-----------------

OTHERS	Size	Main body size: 55 x 26.2 x 13 mm Magnet size: 38.5 x 12.5 x 11 mm
	Weight	26.6g
	Case Material	ABS Plastic
	Chipset	nRF52 ultra low power
	Case	IP66 Dust and waterproof
	Warranty	1 year

value business added

- Prevents wasteful search times
- Increase overall company productivity enhancing inventory management processes.
- Subscription based service.
- Monitor assets from anywhere, anytime, from any type of mobile device..
- Cyber Security Service bundle.
- Tags, communication network and onsite installation are provided as part of the contract.
- Increase assets availability when needed.
- Just login to Asset Tracker Web Suite and get your assets location live.





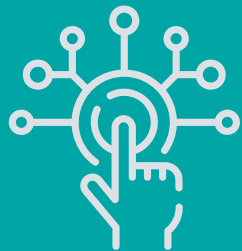
efficiently

Automate inventory control. Physically managing inventory is labor-intensive, inaccurate, costly, and time-consuming



competitiveness

Misplacing assets increase search times and increase responsiveness to pullout, demands



action

Real-time reporting enable timely actions and decisions on inventory management



safety

RTLS can assist with locating your employees during emergencies.



Monitor your assets' & people's location from anywhere, anytime!

creative minds connecting people, objects and data: the professional IoT & business automation services!