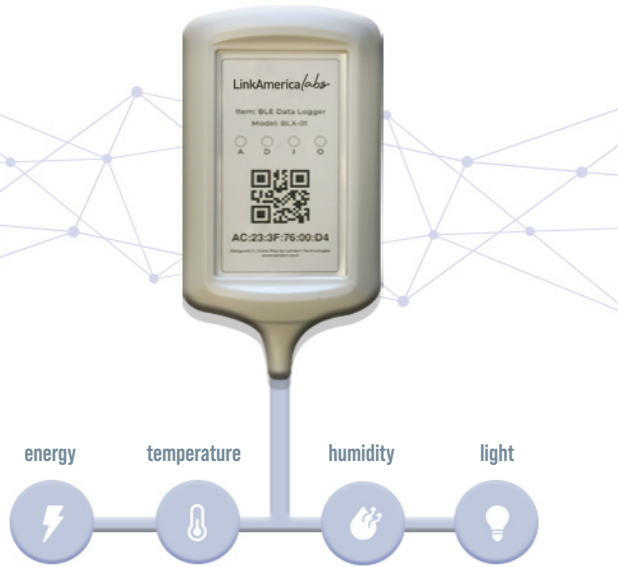


we create it, so you can

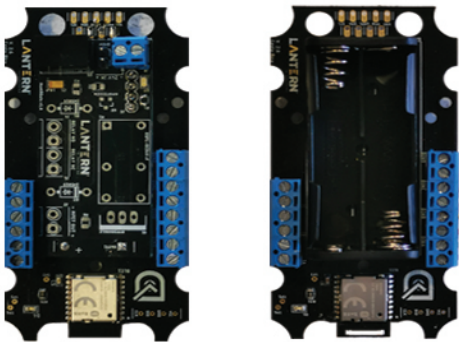
BRING IT TO LIFE

IOT BLE SENSOR



BLX 01 UNIVERSAL IOT DATALOGGER

This device integrates and stores multiple IoT sensors variables and sends them via Bluetooth Low Energy (BLE)



Lantern Technologies is a software and hardware development agency specialized in providing services and products, through cutting edge technologies such as Cognitive Computing, Internet of Things and Machine Learning

key features

- ✓ 4 digital inputs
- ✓ 3 analog inputs
- ✓ Bluetooth 5.0 technology
- ✓ 512K Flash and 64K RAM
- ✓ Max. +4dBm transmission power
- ✓ I2C communication protocol interface.
- ✓ UART communication protocol interfac (slave / master option)

Multi variables sensing

Plug your own compatible sensor

Code your own programmable logic



smart city

Bluetooth enables the automatic, centralized control of a building's essential systems, including heating, ventilation, air conditioning, lighting, and security.



smart industry

Bluetooth sensor networks deployed at scale across a factory floor enable real-time monitoring of system performance and tolerances, creating intelligent machines and whole manufacturing lines that can predict and problem solve.



monitoring tasks

Home appliances or Industrial machinery current consumption monitoring.

3.3V/5V/24V signal reading to monitor the logic states of devices machines or count events.

operation	analog inputs	digital inputs	communic. ports	power source
<p>OPERATION VOLTAGE 2.3 V to 3.7V (with battery)</p> <p>OPERATION FREQUENCY 2400-2483MHz</p> <p>OPERATION CURRENT Up to 40mA</p> <p>SLEEP CONSUMPTION Less 1uA</p> <p>TRANSMISSION DISTANCE Max. 100 meters (330 Feet)</p> <p>DIMENSIONS 42mm * 81mm</p> <p>WIRELESS TECHNOLOGY BLE 5.0</p> <p>CHIPSET Nordic nRF52832 (Cortex M4)</p> <p>TEMPERATURE RANGE -15C to +75C</p>	<p>INPUT CURRENT (DEFAULT*) 50mA, 80mA, 100mA or 200mA</p> <p>INPUT VOLTAGE (WITH LITTLE MODIFICATION) 0-4.191V / Preamp option x2, x4, x8</p> <p>INPUT LOOP CURRENT (WITH LITTLE MODIFICATION) 0 - 25 mA (Industrial Standard)</p> <p>*It includes a 100A/50mA current transformer by default, but it is possible to use different configurations by changing some resistors.</p>	<p>INPUT CURRENT (MAX) +20mA</p> <p>INPUT VOLTAGE 3.3V, 5V or 24V (AC or DC)</p> <p>OPTOCOUPLER ISOLATION Yes</p>	<p>I2C 100KHz, 400KHz</p> <p>UART TTL 3.3V or 5V (RS232 with additional module)</p> <p>1-WIRE Available</p>	<p>BATTERY POWERED OPTION 2x AAA (Energizer Ultimate recommended)</p> <p>5V TO 24V OPTION With additional power module</p>