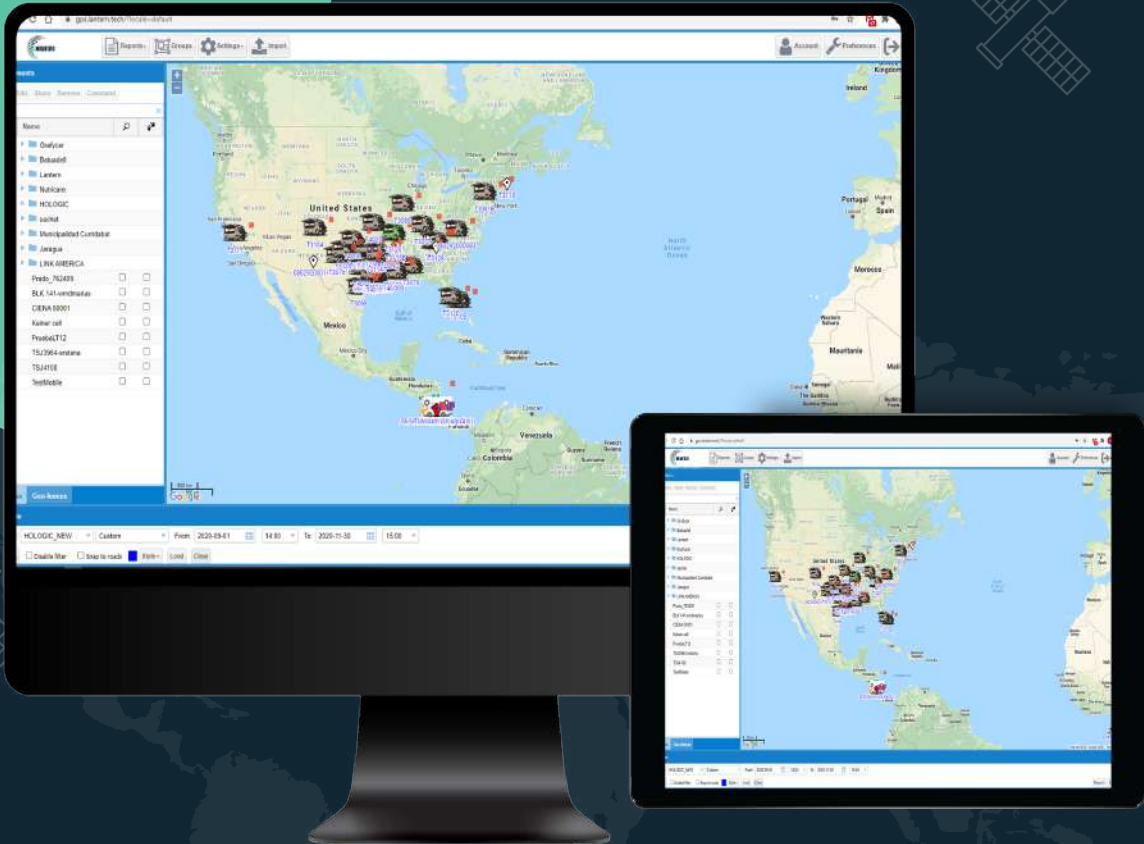




# NAVITAS





## FLEET MANAGEMENT SYSTEM

From country wide car dealers to single fleet owner which need a high value-added platform to offer to its customers, Navitas Platform and the fully compatible line of GPS offered by Lantern, are the best way to start on the fleet management business.

The platform is fully customizable according to company's brands, colors and logos and lantern can also perform new protocol integration with new GPS types and add any custom functionality needed.

## NAVITAS SYSTEM



Supports location history, trip, chart and summary reports

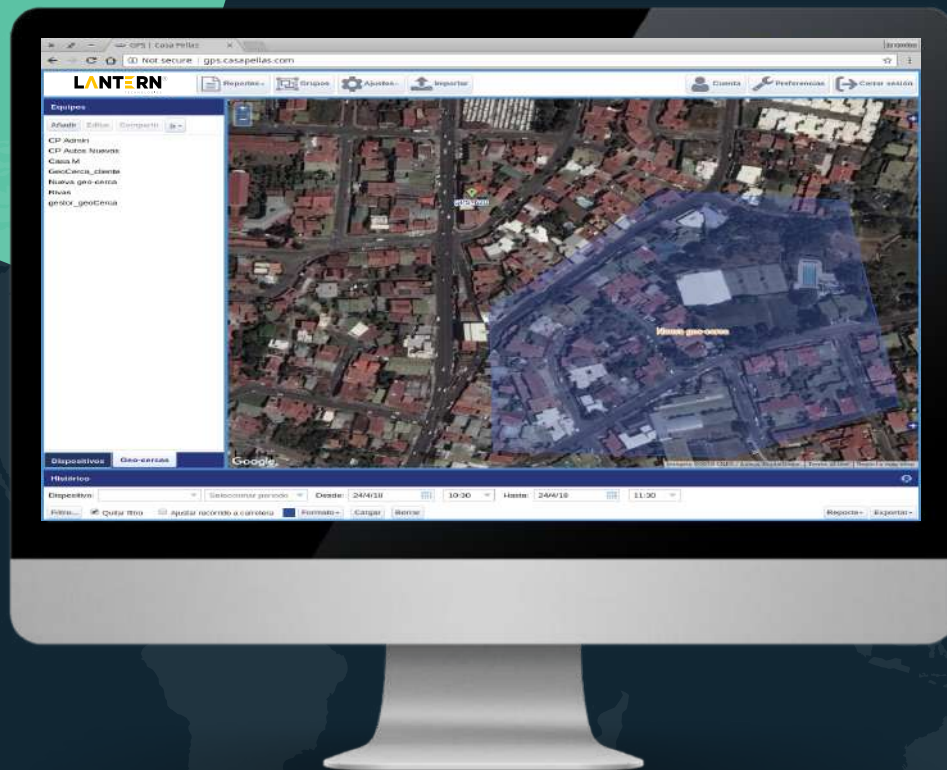
Allow user defined maintenance events and route or area geofencing

Provides web notifications along with support for email. This allows for external alerting in case of harsh driving behavior like speeding, fuel and maintenance events, geo-fencing and many other types of alerts.

View your GPS devices in real-time in a web interface with both desktop and mobile-friendly layouts



# GET THE MOST OUT OF YOUR FLEET ENTERPRISE FLEET MANAGEMENT SOLUTION:



- ✓ PC and mobile friendly web platform
- ✓ General map visualization.
- ✓ Private account control.
- ✓ Display preferences.
- ✓ Group management
- ✓ User management

- ✓ Equipment control
- ✓ Geo-fence control
- ✓ Vehicle Histories
- ✓ Report Engine
- ✓ Maintenance alerts
- ✓ Email notifications



**LT03-4G**

LT03 is a 4G rechargeable long standby GPS tracker for assets monitoring, this tracker is with 5600mAh built in battery which would be able to work alone for long time.



**LT01-4G**

LT01 is a 4G GPS tracker for motorcycles, scooters and vehicles, it supports wide voltage and anti-theft function.



**LT12-4G**

LT12 is a tracker which is designed for container tracking, this unit can work for 3 to 5 years with 5400~10800mAh battery built in, it will also support humid/temperature monitoring, door status detecting etc.



**4G Wifi OBD GPS Tracker**

IDD-213L is an intelligent on-board diagnostic device compatible with passenger and commercial vehicles, it features plug-and-play technology, could read diagnostic info from vehicle ECU and capture location data, then send them to backend server for real-time remote diagnostic.